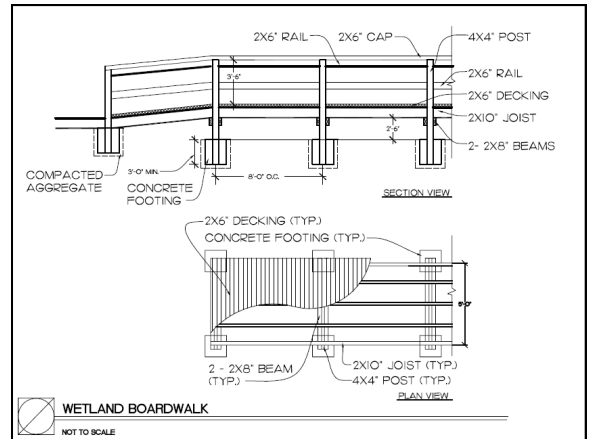


BURGIS ASSOCIATES, INC.

COMMUNITY PLANNING AND DEVELOPMENT CONSULTANTS

After assisting the Borough in receiving grant funding to acquire a 6 acre tract of land featuring a mature forested area, a C-1 stream and an extensive wetland area, the Borough of Park Ridge then approached **Burgis Associates, Inc.** to create a passive, recreational pedestrian trail on the site. The final design features a 2 mile path around the park with an entrance kiosk detailing how the park functions as a large rain garden. Signs are programmed to be placed along the trail offering **educational information** on forest and wetland ecology, along with information on the wildlife such as the Bog turtle and its habitat—which currently inhabits the site. The design not only produced a relaxing educational experience for visitors, but was able to **enhance the site's preexisting ecological elements** by preserving and improving its stormwater management features.

In addition, Burgis Associates, Inc. in collaboration with the Borough engineer has prepared the **site details** to construct the Landscape Architectural improvements, and also prepared **grant writing services** to help secure funding for the proposed improvements.

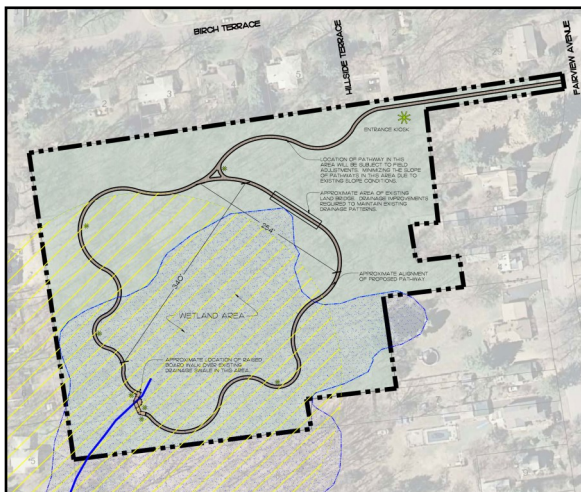


Trail Vision Concepts

FAIRVIEW AVENUE TRAIL
BOROUGH OF PARK RIDGE, NEW JERSEY



Signage Concepts



Design Services

KEY POINTS OF THE PROJECT:

- Improved the 6 acre site with approximately two miles of passive recreational trails delineated to compliment existing site features, vegetation and topography.
- Detail pathway was composed of low impact materials.
- Improved drainage and stormwater control features.
- Signage programming identifying plant material and wildlife and educational information on the site's environmental features.